

gross floor area 50 000 sq m
competition 1990, first prize
construction 1992 - 1999

gsw headquarters berlin



brief

extension and renovation of a
headquarters building

client

Gemeinnützige Siedlungs- und
Wohnungsbau-Gesellschaft mbH, Berlin

awards

Benedictus Award 2003
Bauphysikpreis 2003
Architekturpreis Beton 2001,
Special Mention
Deutscher Architekturpreis 2001,
Special Mention
Mies van der Rohe Award 2001,
Finalist
World Architecture Awards 2001, shortlisted
Deutscher Fassadenpreis 2001
Architekturpreis 2000, BDA Berlin
ar+d Award 2000,
High Commendation
RIBA Award 2000,
shortlisted for Stirling Prize 2000

This ensemble of five distinct volumes combines as-found fragments of the city into a three-dimensional composition which allows an existing 1950s office tower to be re-integrated into its context. The idea of historical conglomerate growth is taken up and promoted as a model for urban development.

The new building responds as much to the logic of the Baroque street plan as it does to the transformations of nineteenth century urbanism. In addition, by absorbing the object-like quality of the existing office tower – one of the first towers built during the redevelopment of Berlin in the late 1950s – it registers the confrontational space that had developed between the high-rises on either side of the Berlin Wall. Rising above its context of disparate spatial configurations from consecutive generations, the new high-rise slab is a unique element which presents associations with both the present and the future.

The red and pink hues of GSW's west façade give an unmistakable identity to the new tower and differentiate the separate elements of the new ensemble: a pair of low-rise buildings along the street clad in anthracite ceramic, the existing tower with its greys and ocre, the so-called pillbox with its greens, and the new slab. The design of the high-rise slab is generated by the creation of an exemplary working environment through the passive control of energy consumption and by commitment to an architecture that is economical towards both natural and built environmental resources. The building prioritizes the value of sensuous space and provides a dynamic painting on the scale of the city.

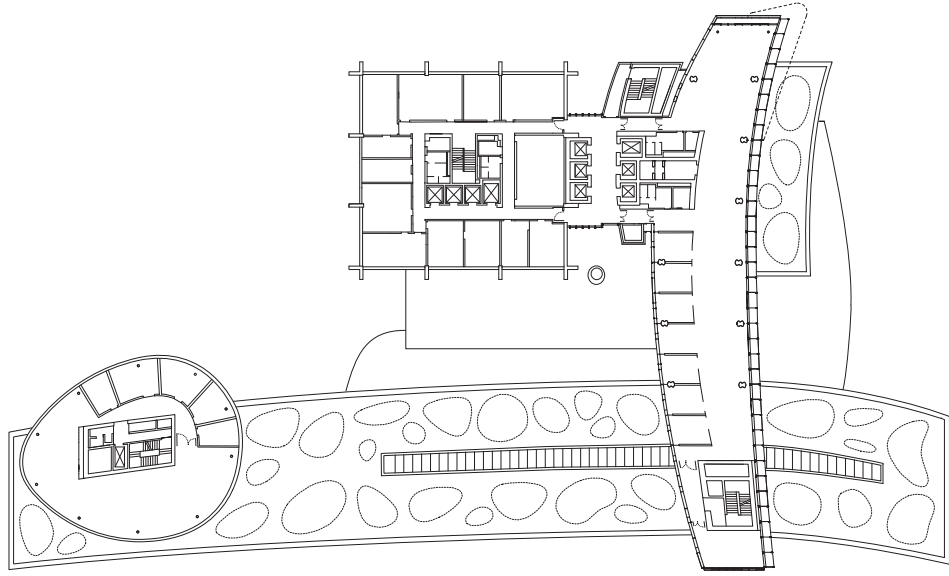


© Annette Kisting

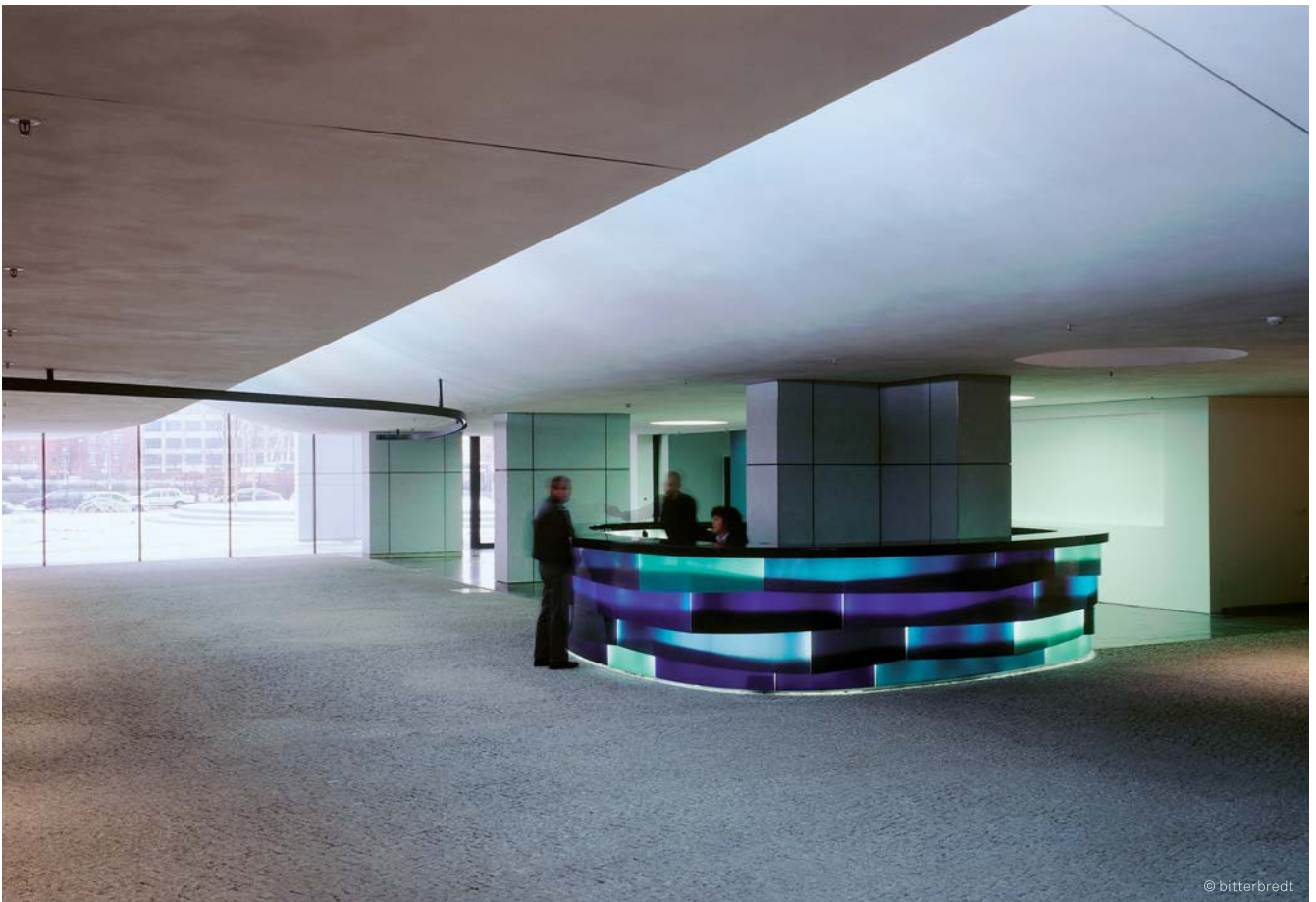


sauerbruch hutton

gsw headquarters, berlin



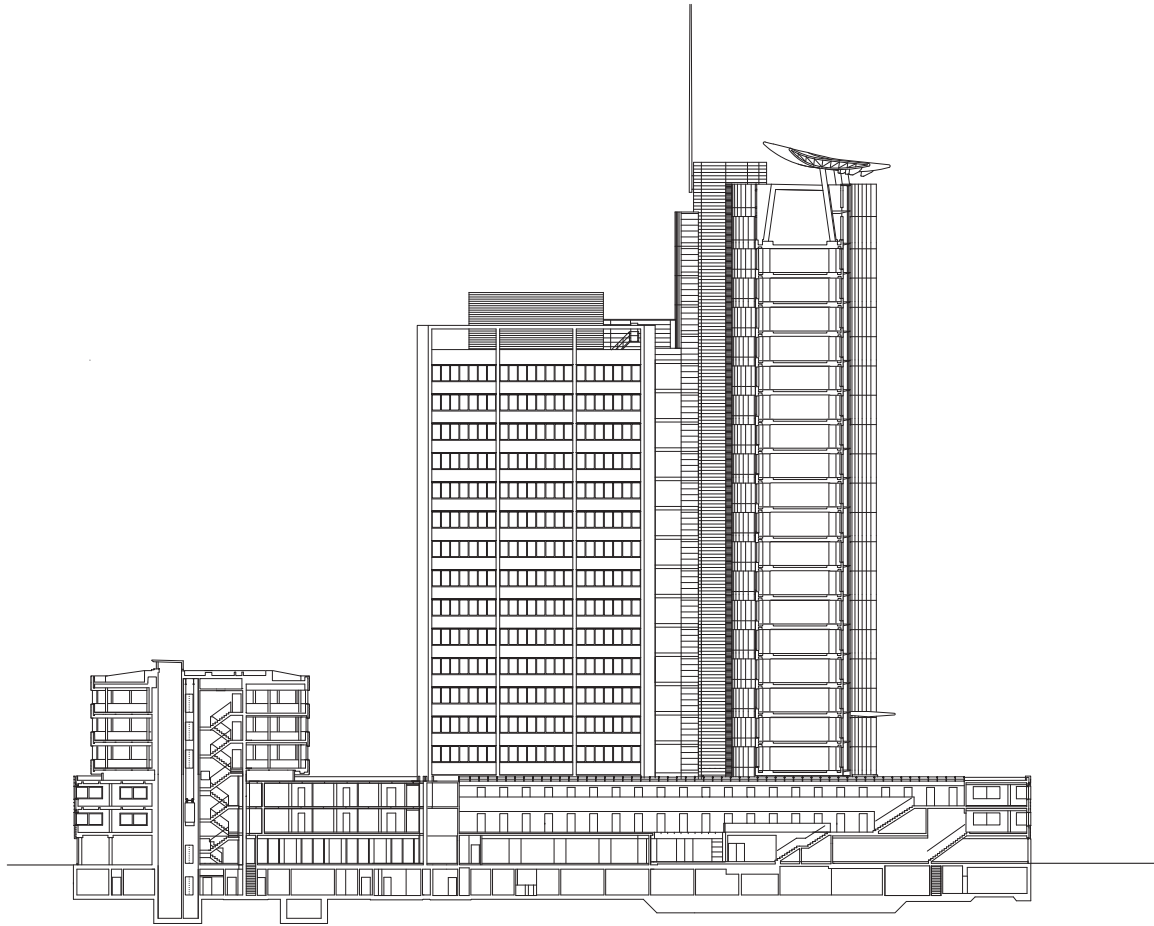
third floor



© bitterbredt



© bitterbredt



© Annette Kising